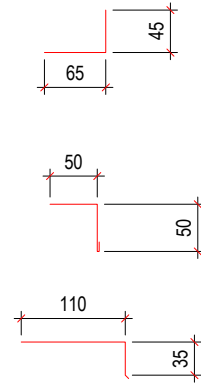


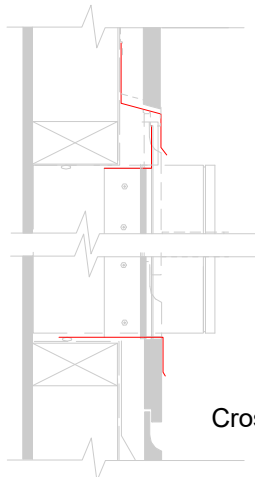
The meter box kit is available in z450 galvanised steel, 5000 Series Aluminium and 304 stainless steel. It suits rectangular metal meter boxes in direct fix and cavity situations that range in size up to 600mm wide by 700mm high. The kit consists of two top corner flashings that lap each other to accommodate the varying widths. The two side flashings slide behind the top corners and can be trimmed to length if necessary. The bottom corners form part of the side flashings. The base flashing will need to be trimmed to length and notched out at both corners to accommodate the cladding thickness. The top 'Z' flashing, which will vary according to the cladding thickness and cavity width, is not included in the kit. Quickflash offer a wide range of 'Z' and window head flashings. Installation instructions are included with the kit together with pop rivets and a drill bit to suit.



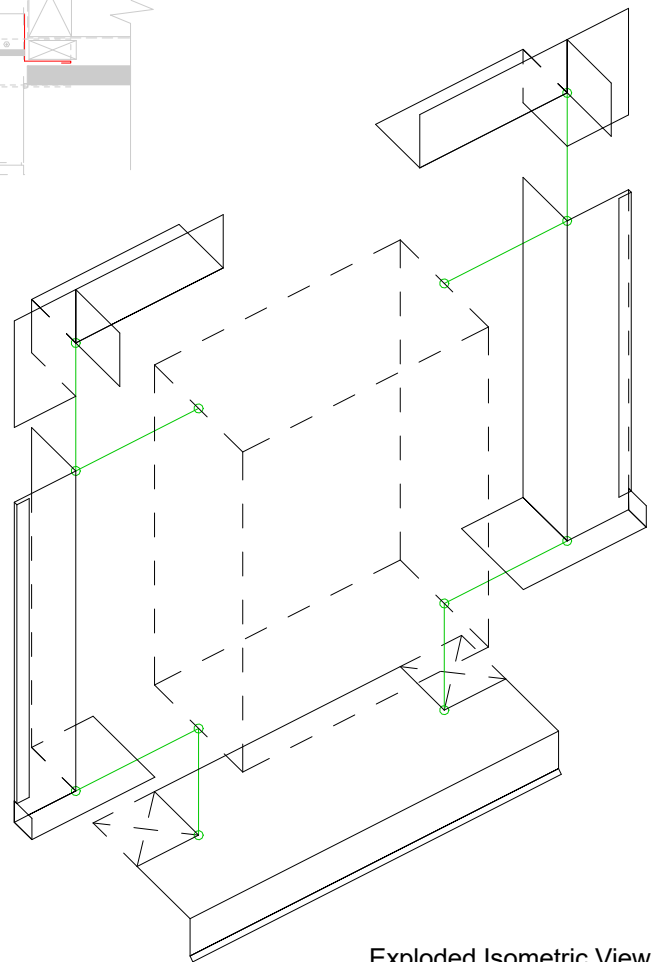
Meterbox opening



Plan view



Cross section



Exploded Isometric View

Quickflash Code 100C			
Aluminium	Colorsteel Maxx	Galvanised Steel	Stainless Steel
Yes	-	Yes	Yes

